

Bulletin: IT_BNT_005_2025
Test date: 12/04/2025



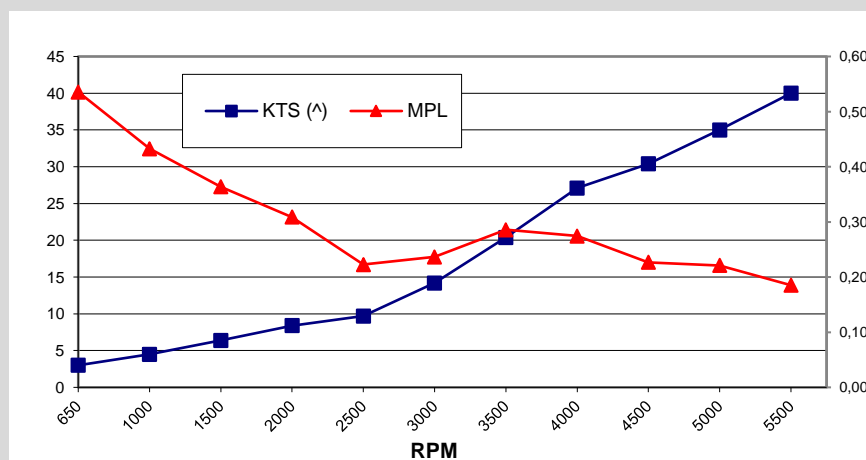
Performance Data

RPM	KTS (^)	LPH	MPL
650	3,0	5,6	0,54
1000	4,5	10,4	0,43
1500	6,4	17,6	0,36
2000	8,4	27,2	0,31
2500	9,7	43,6	0,22
3000	14,2	60,0	0,24
3500	20,4	71,4	0,29
4000	27,1	98,8	0,27
4500	30,4	134,0	0,23
5000	35,0	158,4	0,22
5500	40,0	216,0	0,19

	3000	14,2	60,0	0,24
	3500	20,4	71,4	0,29
	4000	27,1	98,8	0,27
	4500	30,4	134,0	0,23

Time to plane: 4 Sec.

MINIMUM OF PLANE (RPM-Knt): 2900 rpm - 12,7 knt - 50 l/h



(^) 1 Knot = 1 KTS = 1,852 km/h

Speed detected by GPS instrument.

Consumptions detected with Honda Marine instrument.

BENETEAU ANTARES 11

Lenght	11,08 m
Beam	3,51 m
Dry Weight (Published)	5215 kg
Max HP	2 x 300 Hp
HP Test	600 Hp
Fuel Capacity	700 l

2 x BF300 UDU/UCDU

Horse Power	600 Hp
Fuel Delivery	Injection
Displacement	4952 cc
Dry Weight	371 kg
Gear Ratio	1,79
Mounting Height	#3
Propeller (Diam / Pitch)	16" x 17" 3 Blade S/S

Test Conditions:

Weight as Tested (Approximate)	6600 kg
Number of People	3
Air Temperature	20 °C
Water Temperature	n/a °C
Elevation	0
Wind velocity	no wind
Test area condition (Lake)	0,5 m waves

Comments:

Test weight includes furthermore, 400 Lt. of fuel, others boat accessories, people, safety and test equipment. Without anti-fouling.

Note:

The values indicated were found in the test performed and in the specific conditions reported. It is good to consider that different environmental conditions, loading and set-up of the boat can affect performance. For these reasons the reported data must not influence, in any way, the judgment on the boat.

Test performed and certified by Honda Motor Europe LTD (Italy)