

Bulletin: IT_ZAR_006_2025
Test date: 12/04/2025

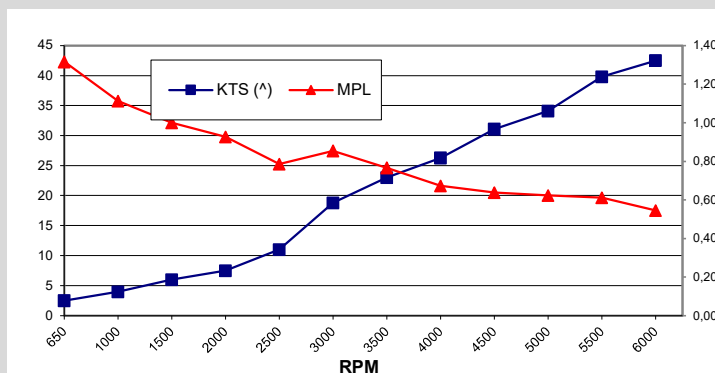


Performance Data

RPM	KTS (^)	LPH	MPL
650	2,5	1,9	1,32
1000	4,0	3,6	1,11
1500	6,0	6,0	1,00
2000	7,5	8,1	0,93
2500	11,0	14,0	0,79
3000	18,8	22,0	0,85
3500	23,0	30,0	0,77
4000	26,3	39,1	0,67
4500	31,1	48,7	0,64
5000	34,1	54,7	0,62
5500	39,8	65,0	0,61
6000	42,5	78,0	0,54

ECOmo
ECONOMIZER MODE

Time to plane: 3 Sec.



(^) 1 Knot = 1 KTS = 1,852 km/h

Speed detected by GPS instrument.

Consumptions detected with Honda Marine instrument.

Test performed and certified by Honda Motor Europe LTD (Italy)

Boat: ZAR 790 SL

Lenght	7,90 m
Beam	2,86 m
Dry Weight (Published)	1100 kg
Max HP	300 Hp
HP Test	250 Hp
Fuel Capacity	200 l

Engine: BF250D XDU

Horse Power	250 Hp
Fuel Delivery	Injection
Displacement	3583 cc
Dry Weight	282 kg
Gear Ratio	2.0:1
Mounting Height	#3
Propeller (Diam / Pitch)	15 1/2" x 18" 3 Blade S/S

Test Conditions:

Weight as Tested (Approximate)	1700 kg
Number of People	2
Air Temperature	20 °C
Water Temperature	n/a °C
Elevation	0
Wind velocity	3/4 Knots
Test area condition (Sea)	0,5 m waves

Comments:

Test weight includes furthermore, 120 Lt. of fuel, others boat accessories, people, safety and test equipment.

Note:

The values indicated were found in the test performed and in the specific conditions reported. It is good to consider that different environmental conditions, loading and set-up of the boat can affect performance. For these reasons the reported data must not influence, in any way, the judgment on the boat.